

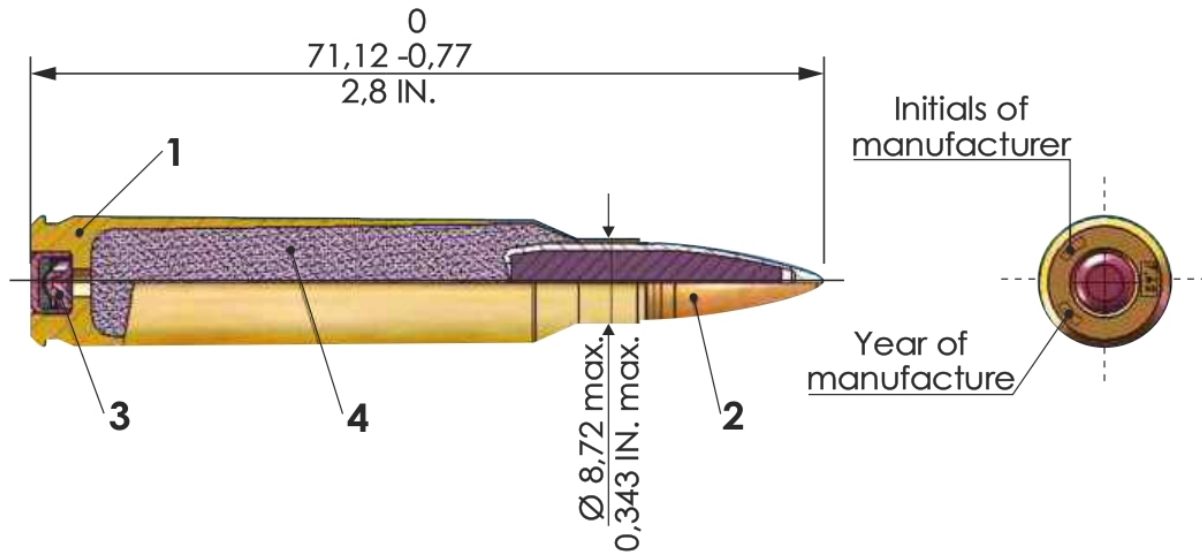


## Uzina Mecanică Cugir SA

515600, Cugir, Alba, Romania, 21 December 1989 Street, No.1,  
Tel.: 0040 258 751 991, Fax: 0040 258 754 940  
e-mail: office@umcugir.ro, officefps@umcugir.ro, umcugir@yahoo.com  
www.umcugir.ro



# Cal. 7.62 × 51 mm CARTRIDGES WITH BALL BULLET



## I CARTRIDGE COMPONENTS

- 1.1 Cartridge case made of 70/30 brass
- 1.2 Bullet of 9.6 g (147.7 gr) with:
  - bullet jacket made of 90/10 brass;
  - cores made of steel;
- 1.3 Primer – Boxer type, non corrosive
- 1.4 Propellant – double base type

## II TECHNICAL DATA

- |     |                                               |                                                                                                  |
|-----|-----------------------------------------------|--------------------------------------------------------------------------------------------------|
| 2.1 | Medium velocity of the bullet at 24 m:        | $V = 838 \text{ m/s} \pm 15 \text{ m/s}$<br>$V = 2750 \text{ fps} \pm 30 \text{ fps}$            |
| 2.2 | Mean case mouth max. pressure:                | $P_{\text{med.max}} \leq 380 \text{ MPa}$<br>$P_{\text{med.max}} \leq 55000 \text{ psi}$         |
| 2.3 | Individual max. case mouth pressure:          | $P_{\text{max.max}} \leq 400 \text{ MPa}$<br>$P_{\text{max.max}} \leq 58016 \text{ psi}$         |
| 2.4 | Mean port pressure:                           | $P_{\text{med.max port}} \geq 61 \text{ Mpa}$<br>$P_{\text{med.max port}} \geq 8702 \text{ psi}$ |
| 2.5 | Accuracy: The average of mean radius at 550 m | $R \leq 25 \text{ cm}$ $R \leq 9.8 \text{ inch}$                                                 |
| 2.6 | Identification                                | Unpainted                                                                                        |

## III. PACKING

20 rds/cardboard box; 20 cardboard boxes/UN certified metallic box;  
105 metallic boxes/pallet. 1 pallet contains 41600 rds. Net weight: 999 kg;  
Gross weight: 1125 kg; Volume of 1 pallet:  $0.83 \text{ m}^3$  ( $1.12 \times 0.88 \times 0.85 \text{ m}$ ).